



*Jordan fishwick*

Goyt Road Disley Stockport



## Goyt Road Disley Stockport SK12 2BT

£182,500



### The Property

**\*\*\* NO ONWARD CHAIN \*\*\*** A spacious and well presented three bedroom first floor apartment within a short walking distance from Lyme Park and Disley Village Centre, with accessibility to local schools and amenities Disley has to offer. This first floor apartment has an abundance of space and would be perfectly suited to young first time buyers or investors alike. In brief the property comprises: entrance hall, living room, fitted kitchen, two double bedrooms, single bedroom and family bathroom. Other notable highlights include PVC double glazing & gas central heating. Viewings of this property are highly recommended.



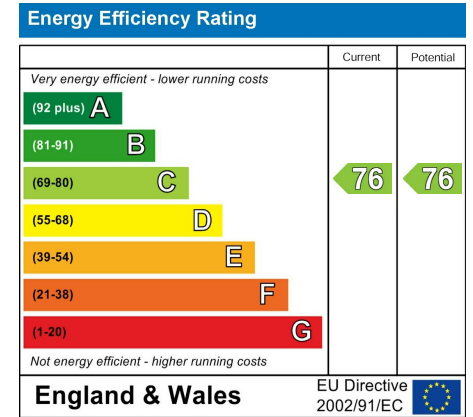
- Two Double Bedrooms and One single
- Close to Disley Village Centre and Amenities
- Stunning Views Over Farmland and Local Park
- First Floor Flat
- Pvc Double Glazing and Gas Central Heating
- Beautifully Presented
- Peaceful setting

**Postcode** SK12 2BT

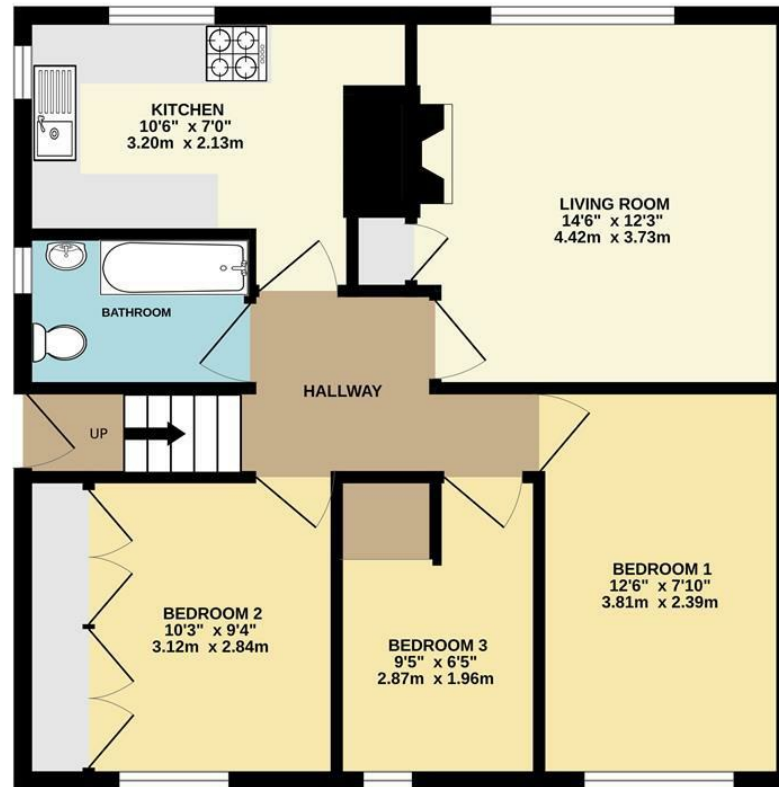
**EPC Rating** C

**Local Authority** Cheshire east

**Council Tax** A



## GROUND FLOOR



Whilst every attempt has been made to ensure the accuracy of the floorplan contained here, measurements of doors, windows, rooms and any other items are approximate and no responsibility is taken for any error, omission or mis-statement. This plan is for illustrative purposes only and should be used as such by any prospective purchaser. The services, systems and appliances shown have not been tested and no guarantee is given as to their operability or efficiency can be given.  
Made with Metropix 62025



These particulars are believed to be accurate but they are not guaranteed and do not form a contract. Neither Jordan Fishwick nor the vendor or lessor accept any responsibility in respect of these particulars, which are not intended to be statements or representations of fact and any intending purchaser or lessee must satisfy himself by inspection or otherwise as to the correctness of each of the statements contained in these particulars. Any floorplans on this brochure are for illustrative purposes only and are not necessarily to scale.

Offices at: Chorlton, Didsbury, Disley, Hale, Glossop, Macclesfield, Manchester Deansgate, Manchester Whitworth Street, New Mills, Sale, Wilmslow and Withington

14 Market St, Disley, Cheshire, Stockport SK12 2AA

01663 767878

disley@jordanfishwick.co.uk

www.jordanfishwick.co.uk